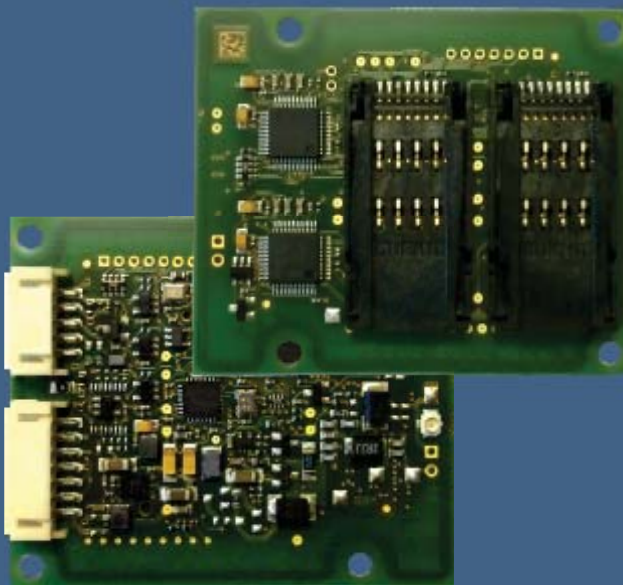


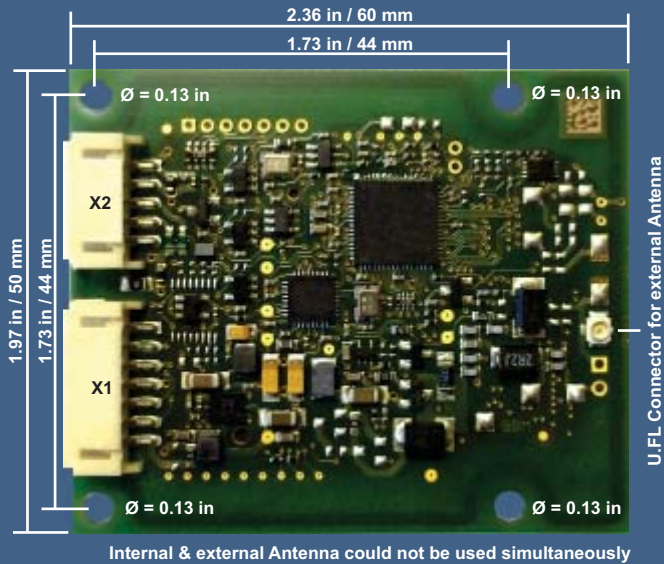
CPR44.0x high-power reader module

RFID module for ePayment, eTicket & eMobility applications



- Ready for EMVCo Level 1 certification
- Internal antenna and U.FL connector for external antenna
- Highly integrated design / small footprint
- Supports NFC-Applications
- 4 SAM-Sockets (ID000-Format)
- Integrated high level support for MIFARE™ classic, MIFARE™ DESFire EV1, MIFARE™ Plus and MIFARE™ Ultralight C encryption
- USB & RS232 interface
- Driver & SDKs for Windows / Linux

- **Contactless Payment**
- **Vending**
- **eTicketing**
- **eMobility**



Specifications

Dimensions (W x H x D)	2.36 in x 1.97 in x 0.55 in (60mm x 50mm x 14mm) approx. 0.71 oz / 20 g
Weight	
Environmental conditions	
Operation	-13°F - 158°F (-25 °C - 70 °C)
Storage	-40°F - 185°F (-40 °C - 85 °C)
Relative humidity	0 % - 95 % (noncondensing)
Supply voltage	5.0 V DC ± 5 %
Power consumption	
Operation	300 mA typ.
Operation frequency	13.56 MHz
Transmitting power	400 mW
RFID Interface	ISO/IEC 14443-A / -B, NFC
Antenna	Internal Antenna, U.FL Connector for external Antenna
Host interface	USB Full Speed (12 MBit/s) RS232 TTL (up to 230 kBit/s)
Smartcard interface (ISO7816)	4 SAM-Sockets (ID000) T=0 and T=1 Protocol Voltage category A, B & C
I/O	3 digital outputs
Operating mode	Polling Scan-Mode (RS232 only, FW ≥3.0)

Certifications of conformity


Radio	EN 300 330
EMV	EN 301 489
Security	
Voltage	EN 60950
Human Exposure	EN 50364
Environment	WEEE – 2002/96/EC RoHS – 2002/95/EC
Payment	Ready for EMVCo Level 1 certification

OEM

Software Development Kits	Microsoft Windows®, Windows CE or Linux. (C++, Java, .NET)
OBID® USB Driver, PC/SC Driver (WHQL)	Windows Server 2003 and 2008, Windows XP SP2, Windows CE, Windows Vista x86/x64, Windows 7 x86/x64,

Subject to modifications.
Rev. 2012 / 02



	CPR44.01-4CUSB	CPR44.02-4CUSB	CPR44.01-CUSB	CPR44.02-CUSB
Dimensions	2.36 in x 1.97 in x 0.55 in		2.36 in x 1.97 in x 0.30 in	
Antenna external internal	• -	• ¹ • ¹	• -	• ¹ • ¹
SAM-Sockets	4		-	

¹ Internal and external antenna could not be used simultaneously.

The CPR44.0x series are specially designed for Automated Fare Collection (AFC) systems and for integration into ticket, parking and vending machines or EV charging stations.

The CPR44.0x series supports the next-generation of contactless credit cards (Europay, MasterCard, Visa) and contactless debit cards (german girogo card). All common smart cards according to ISO/IEC 14443-A / -B and NFC applications are supported. With four SAM sockets (ID000 format) the CPR44.0x also supports customer-specific applications.

Integrated SoftCrypto und SAMCrypto high-level features for easily operated access to encrypted data of MIFARE™ DESFire EV1, MIFARE™ PLUS und MIFARE™ Ultralight C smartcards. Software Development Kits (SDKs) are available for Windows and Linux (C++, Java, .NET).